

CONTROL DIAGRAM POINT HOPE

68° 20' 44" N 166° 48' 25" W (NAD 83)
 Approx. Elevation: 14.50' at NGS Brass Cap "POINT HOPE 1950"
 Township 12 South,
 Range 61 West, U.M. AK
 And Townships 33 & 34 North,
 Ranges 32, 33, 34, & 35 West, K.R.M., AK
 U.S.G.S. Quadrangles "POINT HOPE B-2 & B-3," Alaska
 BARROW RECORDING DISTRICT

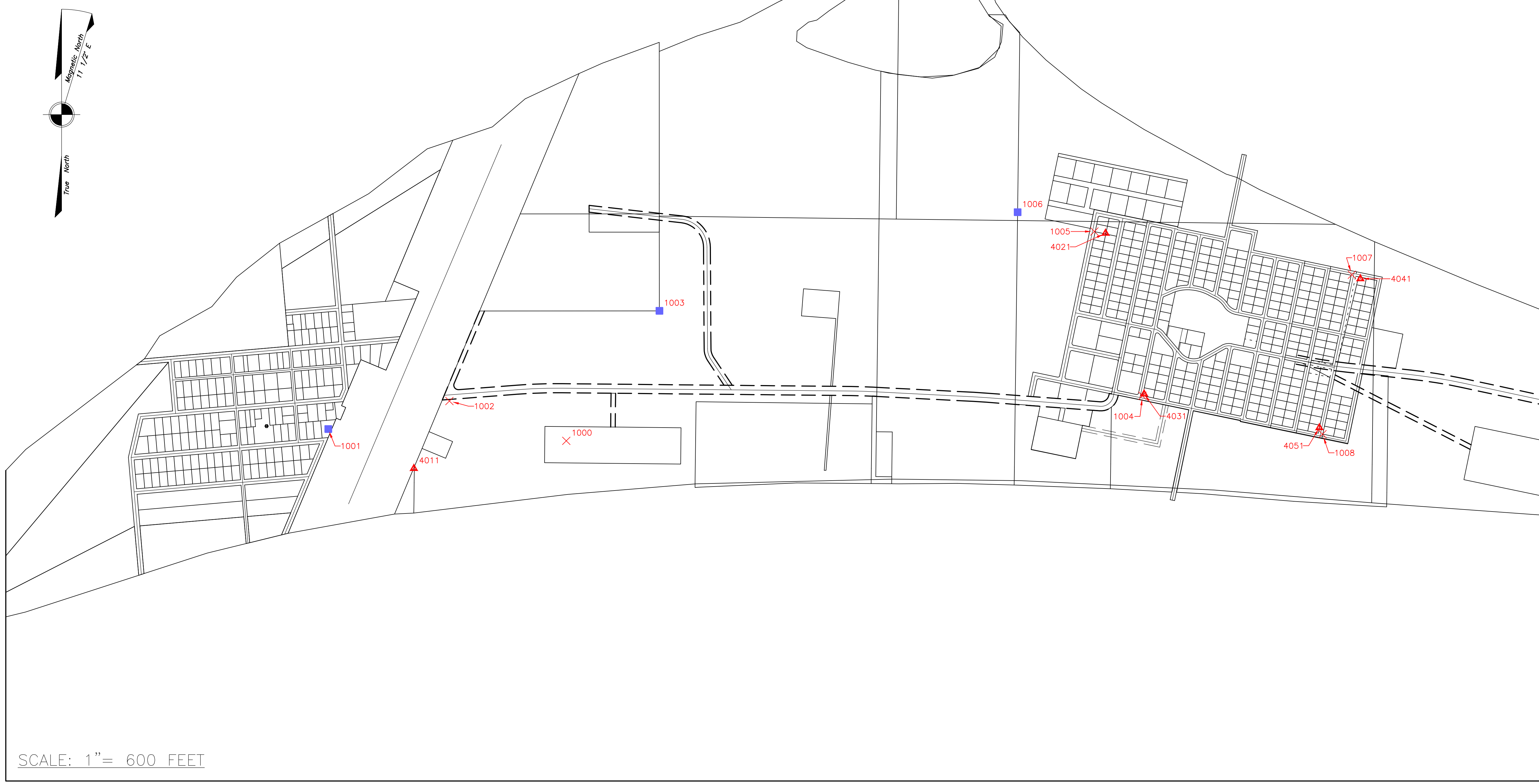
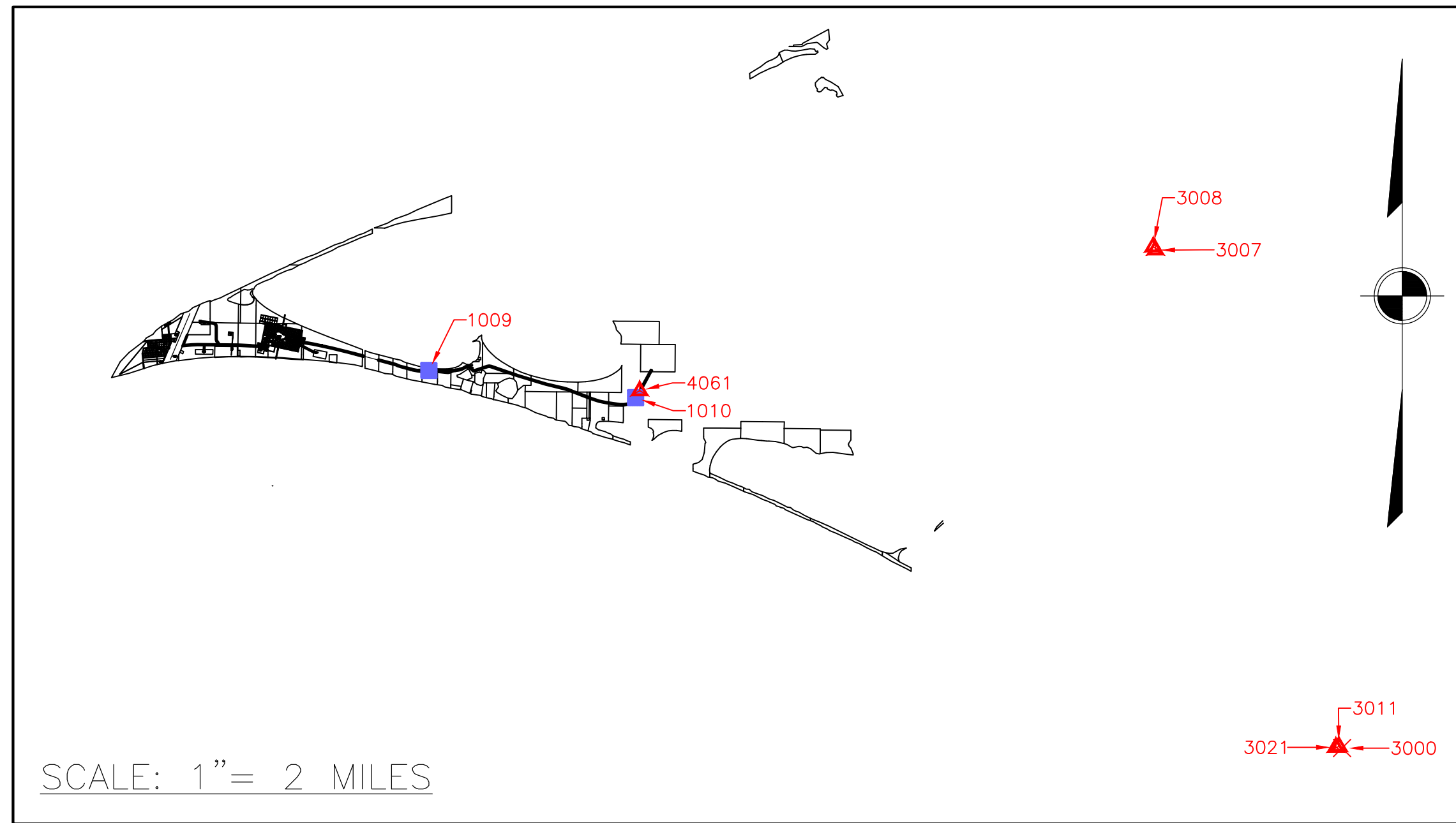
LEGEND

- 1003 ■ Recovered Secondary monument.
- 1004 × Located Building corner, Utility, ground shot, or other topographic feature.
- 3007 ▲ Photo Control Point



NOTES:

- This survey was accomplished using the Global Positioning System (GPS) with Trimble R-6 and R-8 carrier-phase receivers. GPS data was obtained using static, fast static, and real time kinematic (RTK) techniques. Positional data for the control is in Nad 83, Alaska State Plane Zone 8 (Foot).
- Basis of Horizontal and vertical Control is 3-1/2" Brass Cap Monument "POINT HOPE 1950" using NGS OPUS to provide NAD-83, ASP Zone 8 coordinates. The GEOID-12A elevation of POINT HOPE 1950 is 14.50 ft.



Control Monuments

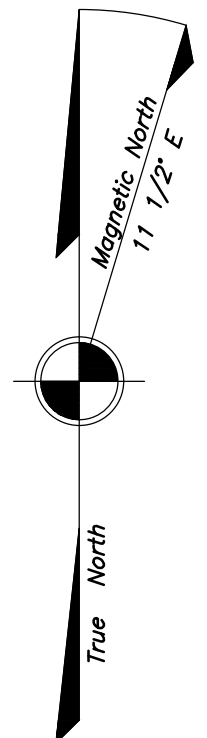
Pt. #	Name	Elev.	Northing	Easting	Latitude	Longitude
1000	BASE 1	31.47	5244513.20	1533974.98	N68° 20' 43.1671"	W166° 47' 15.3900"
1001	NGS Point Hope	14.50	5244642.32	1531351.43	N68° 20' 44.1034"	W166° 48' 25.3126"
1003	S3515 L13A C3	18.20	5245945.40	1535000.29	N68° 20' 57.3847"	W166° 46' 48.5637"
1006	S11977 L6 WP	16.84	5247032.57	1538947.44	N68° 21' 08.5622"	W166° 45' 03.7659"
1009	ROW 91-5	14.76	5242856.44	1553849.40	N68° 20' 29.1329"	W166° 38' 25.5634"
1010	ROW 91-5	28.93	5240519.33	1571659.27	N68° 20' 07.7731"	W166° 30' 30.7422"
3000	BASE 2	480.85	5210322.22	1632523.31	N68° 15' 13.4301"	W166° 03' 29.4161"

Utility Shots

Pt. #	Name	Elev.	Northing	Easting	Latitude	Longitude
1002	PP	15.97	5244952.03	1532686.72	N68° 20' 47.3212"	W166° 47' 49.8538"
1004	PP	19.04	5245009.45	1540323.50	N68° 20' 48.8232"	W166° 44' 26.4553"
1005	PP	15.71	5246820.45	1539794.65	N68° 21' 06.5765"	W166° 44' 41.1252"
1007	PP	14.74	5246344.07	1542631.27	N68° 21' 02.2225"	W166° 43' 25.4005"
1008	PP	20.56	5244586.87	1542307.11	N68° 20' 44.8981"	W166° 43' 33.4852"

HV Shots

Pt. #	Name	Elev.	Northing	Easting	Latitude	Longitude
3007	HV 303	71.01	5253257.41	1616448.14	N68° 22' 15.5472"	W166° 10' 39.1792"
3008	HV 304	73.22	5253522.28	1616250.21	N68° 22' 18.1475"	W166° 10' 44.4781"
3011	HV 301	468.46	5210470.15	1632248.87	N68° 15' 14.8829"	W166° 03' 36.7008"
3021	HV 302	457.76	5210395.73	1631986.71	N68° 15' 14.1482"	W166° 03' 43.6543"
4011	HV 401	16.58	5244208.70	1532295.50	N68° 20' 39.9588"	W166° 48' 00.0173"
4021	HV 402	15.89	5246801.00	1539916.62	N68° 21' 06.3997"	W166° 44' 37.8693"
4031	HV 403	17.70	5246029.87	1540341.71	N68° 20' 49.0262"	W166° 44' 25.9767"
4041	HV 404	15.08	5246299.13	1542724.43	N68° 21' 01.7911"	W166° 43' 22.9046"
4051	HV 405	19.82	5244657.55	1542272.46	N68° 20' 45.5894"	W166° 43' 34.4303"
4061	HV 406	23.02	5241120.28	1572016.25	N68° 20' 13.7143"	W166° 30' 21.3690"



SCALE: 1" = 600 FEET

PHO

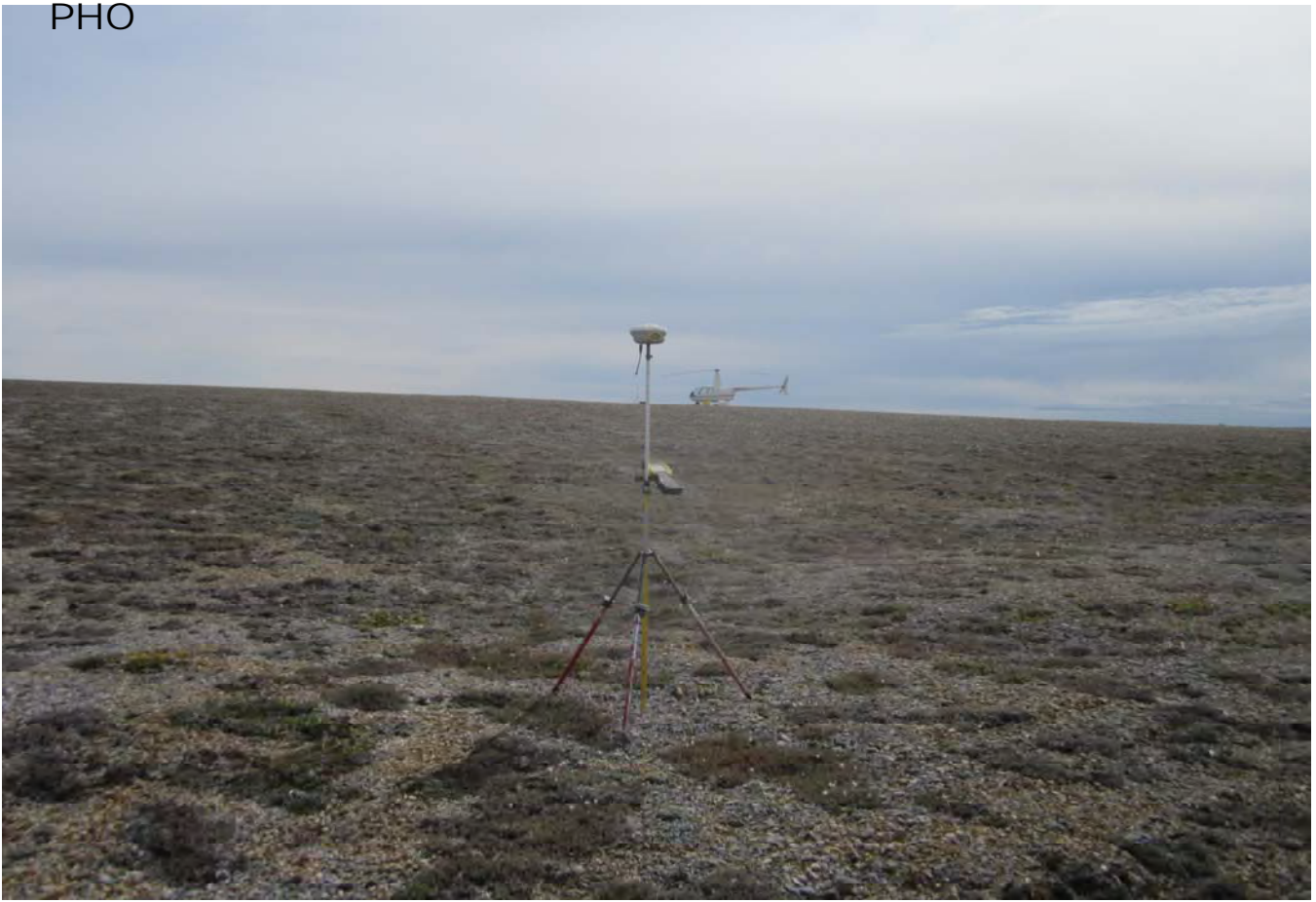


1000-BASE1

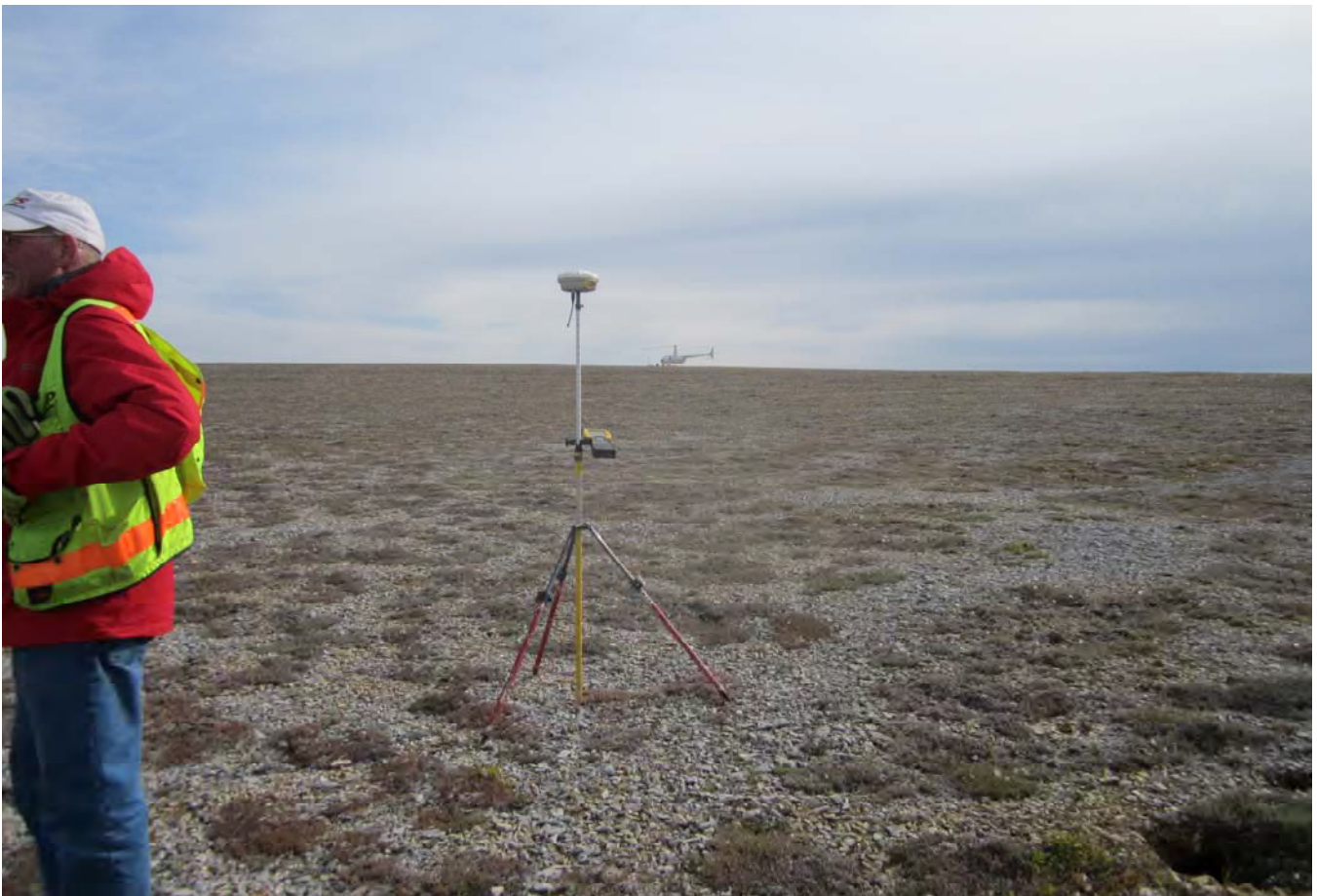


3000-BASE2

PHO

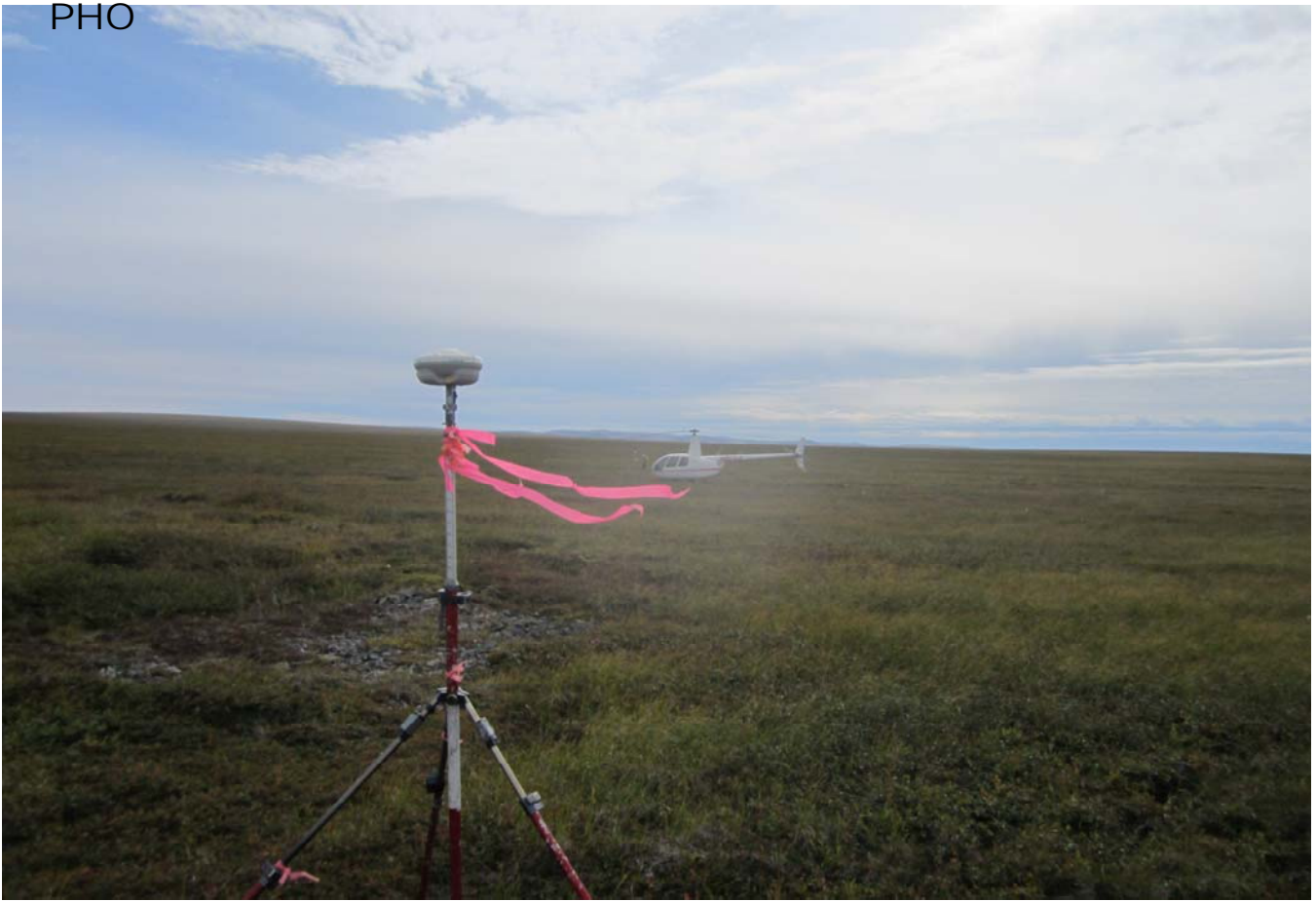


HV301



HV302

PHO



HV304



HV401-1

PHO



HV401-2



HV401-3

PHO



HV402-1

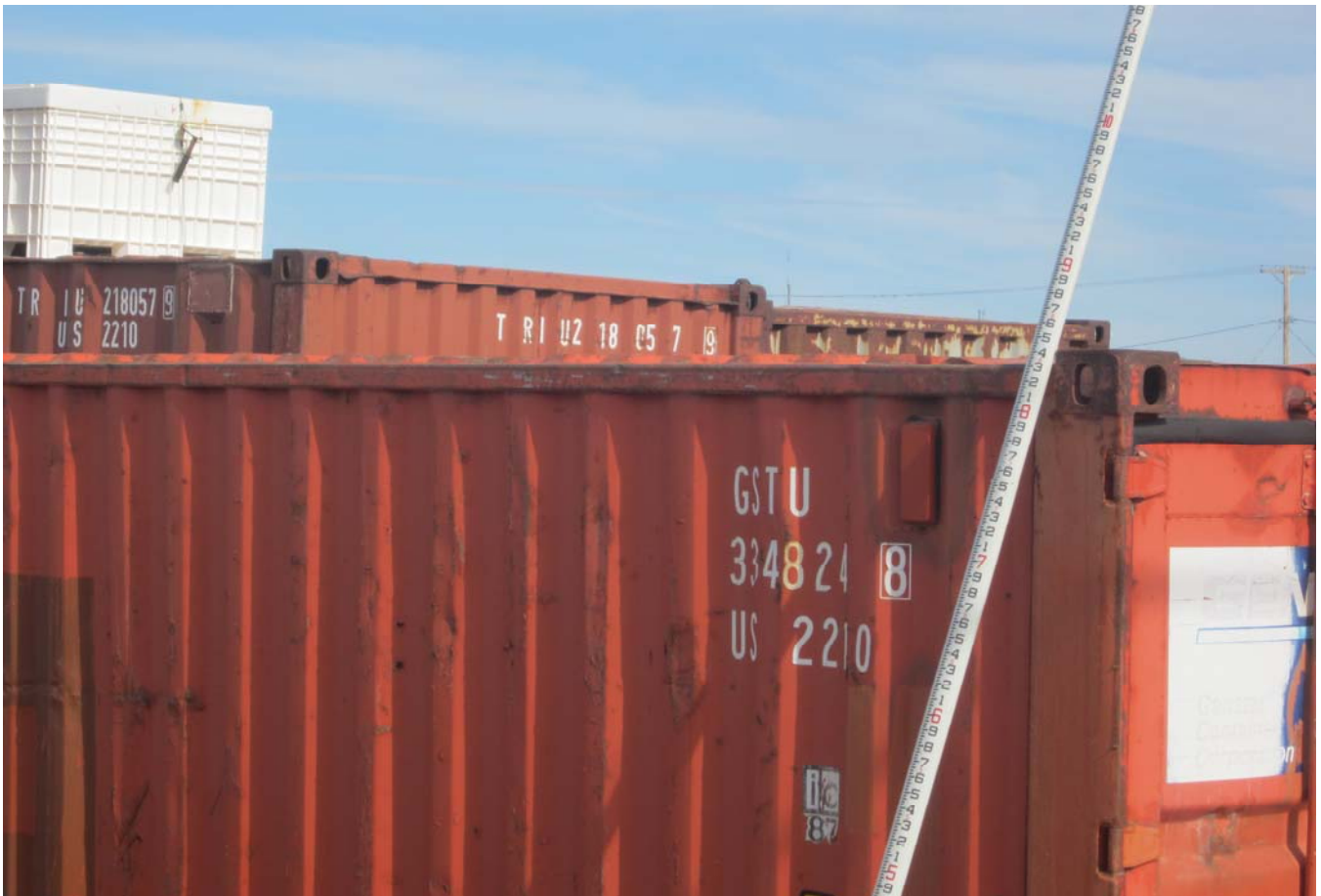


HV402-2

PHO



HV403-1



HV403-2

PHO



HV404-1



HV404-2

PHO



HV405-1



HV405-2

PHO



HV406-1



HV406-2



1001-NGS Point Hope